



Smart POP2Exchange ^{v8}

POP3 / IMAP Connector for Exchange and SMTP Servers With Filter Functions

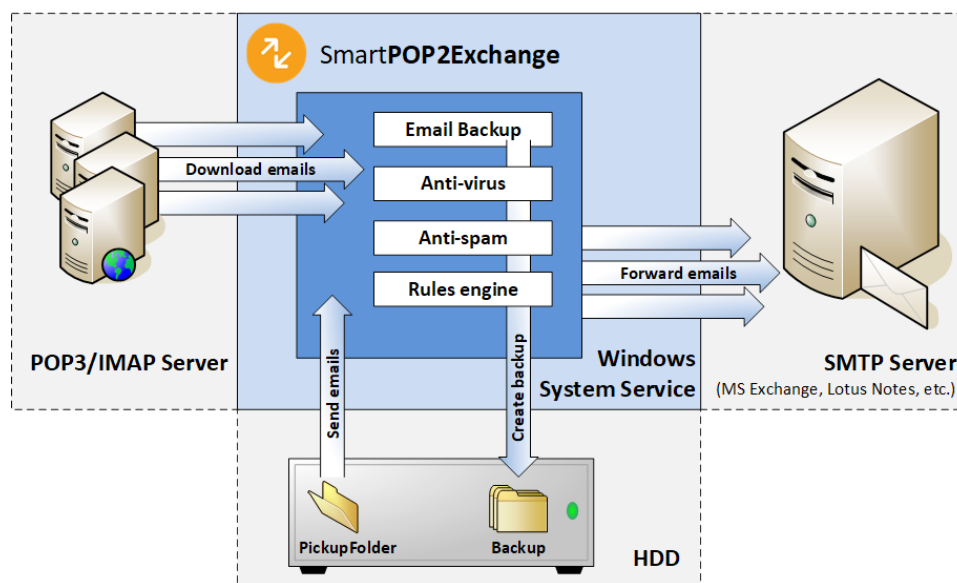
Emails often reside in the Internet in POP3 or IMAP accounts. They are not directly accessible for an SMTP server. With SmartPOP2Exchange you can connect these accounts to a Microsoft Exchange or any other SMTP server.

The all-rounder works in the background as a system service: SmartPOP2Exchange downloads all emails from different inboxes and directs them on to your Exchange or other SMTP server. All messages are filtered reliably and archived automatically. An extensive, powerful and flexible rules engine supports individual conditions and actions.

The software is available as Small Business or comprehensive Enterprise Edition. Please refer to our [website](#) for a detailed comparison of the editions.

Main Features of SmartPOP2Exchange

- > POP3 / IMAP gateway for Exchange, Lotus Notes and any other SMTP server.
- > Powerful rules engine for processing incoming emails with diverse actions.
- > Integrated spam filter SpamAssassin with Bayes filter and the ability to learn automatically via black- and whitelists.
- > Automatic archiving of incoming emails.
- > Protection from phishing mails through the anti-virus software ClamAV.



Functionality of SmartPOP2Exchange

One Connector – two Editions

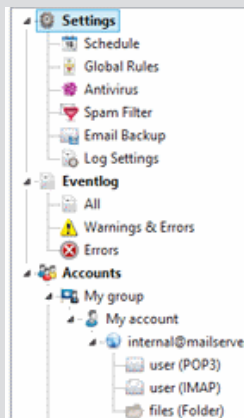
SmartPOP2Exchange is available in two different editions: The Small Business Edition can retrieve mails from up to 10 POP3 / IMAP accounts and with the Enterprise Edition you can process accounts unlimitedly.

Functionality and Interface

SmartPOP2Exchange works in the background as an independent system service.

The user-friendly and clear configurations interface is similar to the Microsoft Management Console (MMC). Here you have access to your settings, accounts and the log file.

Proven Spam Protection



Overview of the main features of SmartPOP2Exchange

The reliable spam filter SpamAssassin is delivered ready-to-go and uses a variety of detection technologies such as a statistical Bayes filter, an integrated blacklist and whitelist (for email addresses and words), blacklist server queries and static filters.

Besides that, you can automatically and manually train desired (ham) and undesired (spam) mail, which in turn increases the efficiency of the spam filter, the longer it is in use.

Integrated Virus Scanner

The well-known anti-virus software ClamAV is an integral part of the software. As a result, no additional virus scanner is necessary to filter viruses from emails.

SmartPOP2Exchange can also incorporate almost every installed virus scanner to recognize and delete infected emails.

Flexible Rules Engine

A powerful set of rules simplifies the processing of incoming emails similar to that of Microsoft Outlook.

SmartPOP2Exchange offers a variety of definable actions that can be carried out under specific conditions. With help of the rules engine,

you can e.g. handle spam, directly delete messages with specific properties or forward them to several people.

Automatic Archiving

SmartPOP2Exchange contains a backup function that can automatically write all incoming emails into a specified directory. This provides a simple way of fulfilling the law requirements in terms of archiving business emails.

High Recognition Rate

The integrated spam filter SpamAssassin and the virus scanner ClamAV work very efficiently, having a spam and virus recognition rate of over 99%. Therefore your inbox remains secured from undesired emails.

Additional Features

- Pickup Folder: A folder with email files (EML) can also serve as a source. The emails are retrieved from the folder and directly processed, similar to POP3 or IMAP accounts.
- Support for catchall accounts that contain the emails from many users. These emails are automatically distributed to the original addressee.
- Configure days and times in the time control in which emails shall be called upon.
- With help of the detailed log file you can see all events or search for a specific entry.
- Support for SSL secured connections to POP3 and IMAP servers.

System Requirements

Windows 10 / 8.1 / 8 / 7 (32-bit / 64-bit)

Windows Server 2019

Windows Server 2008 R2 - 2016 (32-bit / 64-bit)

SmartPOP2Exchange supports any desired SMTP server, amongst others:

Microsoft Exchange Server 2016 / 2013 / 2010 / 2007 / 2003,
Tobit, Lotus Notes, Exim, Postfix, SendMail and more...

Test SmartPOP2Exchange for free, for 30 days and with all features of the Enterprise Edition:

You can download the trial version and find more information on our [website](#).