



SpaceObServer^{v5}

The database-based
disk space manager

Disk space bottlenecks cause high IT and energy costs. Save money and working hours with continuous and transparent storage management.

SpaceObServer is an efficient and versatile disk space manager for Windows. With the help of a system service, structure, size and properties of local and network drives as well as Exchange Servers are scanned and saved into a SQL database. In an Explorer-like user interface, evaluated directories can be visualized in hierarchical structures, tables and diagrams. A duplicate file finder and flexible file search with predefined filters allow you to filter files directly out of the database.

SpaceObServer is available in a Standard and an Enterprise Edition. For a detailed comparison, please have a look at our [website](#).

Main benefits of SpaceObServer:

- > Regular and automatable storage scans

- > Storage history recognizes disk space increases

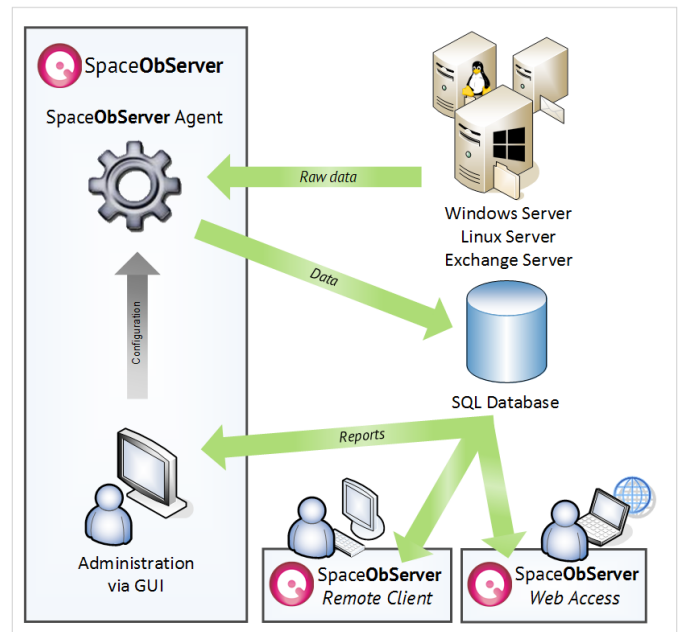
- > Predictive storage analysis by trend lines

- > Automatic size updates by analyzing NTFS change journals

- > File search identifies redundant data

- > Automated reporting via OLE Automation

- > Cross-platform SSH and Exchange Server scans



Dataflow between file system, database, system service and user interface, SpaceObServer add-ons Remote Client and Web Access included

Continuous & Transparent

Through the historical directory information, archived in a backend database, you can follow the development of directory size and predict future development. Disk space bottlenecks can be recognized early and quickly located.

SpaceObServer Add-ons: Remote Client & Web Access

Use the SpaceObServer Add-ons Remote Client and Web Access to access scan data from client PCs or via an internet browser. The Remote Client enables you to start and configure scans (requires write-access to the database).

Independent System Service

The SpaceObServer Agent searches, regularly and fully-automatic, as a system service, selected directories:

- local and network drives

- Exchange mailboxes (down to folder level)

- without installation of additional software on network servers to be scanned

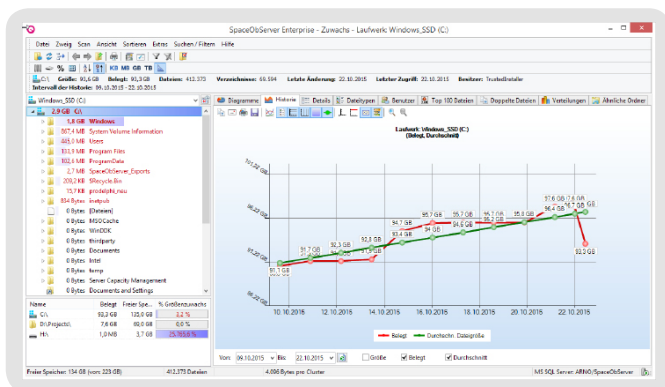
- independent of the operational system of the scanned server - Linux and Unix file systems can be scanned directly via SSH or NFS

Visualization and Export

The allocation of the volume can be visualized and exported as barpie, line chart or as a tree map. Bar and pie graphs illustrate the size and occupied space of all subfolders contained in the currently selected folder. Beyond that, tree maps also display the hierarchical structure of a folder and its subfolders, even across several directory levels.

The line chart illustrates the disk space development and enables predictions of the future development through linear regression.

In addition to the exportable charts, SpaceObServer also offers multiple export possibilities of the collected data (printed report, Excel-, XML-, PDF-, HTML-, RTF-, Text file or Windows clipboard).



SpaceObServer History

Versatile Statistics

SpaceObServer provides detailed information about subfolders and files in a list (e. g. allocated space or percent of parent folder). You can also filter file types and users occupying the most space, the 100 largest files and visualize distributions of file age and size.

Flexible File Search

A versatile file search provides the filtering of files by size, last change, last access, creation date, file extension, name patterns, path patterns and path length, file properties or owner.

Duplicate File Search

Duplicate files can be identified by a combination of file name, size and last modified date. SpaceObServer can also compare their content with MD5 checksums which achieves more precise results.

The detected duplicates can be replaced by links or selected and deleted. This deduplication enables you to save only relevant data and optimizes your storage utilization.

Features for NTFS File Systems

Through evaluation of the NTFS Change Journals, SpaceObServer can continuously update information about local NTFS drives. This means that you always have access to the current directory sizes without having to rescan.

The software also supports file-based NTFS compression, hard links, and alternate data streams.

Automated Scans and Reportings

The OLE Automation interface offers you many export and automation possibilities. It allows SpaceObServer, from your own scripts or programs, remote control and flexible access to analysis results. Tasks that are based on SpaceObServer collected data can be flexibly automated.

All programming languages that offer an OLE Automation interface (i. e. VBScript, VB.NET, C#, Delphi) are supported.

Additional Features

- Complete support of the Explorer context menu within SpaceObServer

- Continuous support of the Unicode text standard

- Correct processing of file paths with more than 255 characters

- Comfortable archiving, deleting and moving of chosen files

System Requirements

Supported Operating Systems

- Windows XP and higher (32 & 64 Bit)
- Windows Server 2003 and higher (32 & 64 Bit)

Supported Databases

- Microsoft SQL Server 2000-2014*
- Oracle 9-11g
- MySQL 5
- IBM DB2 8-10
- Firebird 2
- Microsoft Access (recommended for testing purposes only)

* Bundle deal Microsoft Server Standard 2012 and SpaceObServer available.

test. buy. enjoy.

www.jam-software.com/info/sos

JAM Software GmbH · Am Wissenschaftspark 26 · 54296 Trier · Germany · Tel. +49 651-145653-0 · sales@jam-software.com

JAM